



Louisville, KY  
November 6, 2016

BOAZ will be syndicated at the 2016 All American...

Jars of Clay

# BOAZ-ET

BBR 100  
JH1F JH2F

CHILI x E-91% VALENTINO x E-90% VENERABLE  
x E-90% MERCEDES x E-92% CHOICE-P

+89	+575	+6.4	+2.0	+22.1	+206
CFP	CM\$	PL	TYPE	GJUI	GJPI

CDCB: GPTA 9/16 72%R

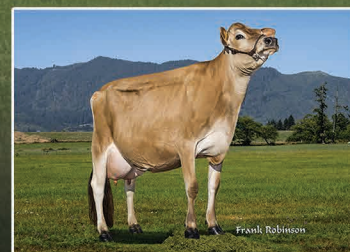
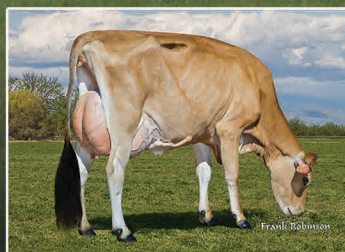


— Maternal sisters to BOAZ —

Dam: **Jars of Clay Valentino Bridget, E-91%**  
1-9 305 3x 20,640 4.3% 893 3.3% 684  
2-11 305 3x 26,210 4.6% 1,194 3.4% 903  
YD: +3,421M +98F +84P | Type +1.9 GJUI +20.1 GJPI +156  
CDCB: GPTA 9/16 83%R

Grandam: **Jars of Clay Venerable 1771 2620-P, E-90%**  
2-8 305 3x 20,050 5.0% 1,011 3.8% 769

The next two dams are Excellent with over 23,000M and 1,000F.



- 50 equal shares are being offered in syndication at \$1,500 each
  - Each share will receive 60 units of semen
- Half shares available for \$750 and will receive 25 units of semen
  - Shareholder semen will be the first semen distributed

Right: **Jars of Clay Plus Brianna I (6)-ET, E-90%**  
1-9 305 3x 24,040 4.7% 1,138 3.6% 871 93DCR

Left: **Jars of Clay Plus Brianna II (6)-ET, VG-85%**  
1-10 305 3x 26,580 4.5% 1,187 3.4% 903 96DCR



BOAZ will be sampled  
with Select Sires

Contact Greg Lavan at 614/216-8838, Kristin Paul at 209/402-5679,  
Jason Robinson 614/216-5862 or any Jersey Marketing Service  
staff to secure your investment opportunity today!



Fresno, CA | pk1jq@hotmail.com | 559.647.1284 phone